

**Readings for the Week of October 20, 2013**

<b>Sunday</b>	<b>Twenty-ninth Sunday in Ordinary Time</b> Ex 17:8-13; Ps 121:1-8; 2 Tm 3:14-4:2 Lk 18:1-8
<b>Monday</b>	Rom 4:20-25; (Ps) Lk 1:69-75; Lk 12:13-21
<b>Tuesday</b>	Rom 5:12, 15b, 17-19, 20b-21; Ps 40:7-10, 17 Lk 12:35-38
<b>Wednesday</b>	<b>Saint John of Capistrano, Priest</b> Rom 6:12-18; Ps 124:1-8; Lk 12:39-48
<b>Thursday</b>	<b>Saint Anthony Mary Claret, Bishop</b> Rom 6:19-23; Ps 1:1-4, 6; Lk 12:49-53
<b>Friday</b>	Rom 7:18-25a; Ps 119:66, 68, 76, 77, 93, 94 Lk 12:54-59
<b>Saturday</b>	Rom 8:1-11; Ps 24:1-6; Lk 13:1-9
<b>Sunday</b>	<b>Thirtieth Sunday in Ordinary Time</b> Sir 35:12-14, 16-18; Ps 34:2-3, 17-19, 23 2 Tm 4:6-8, 16-18; Lk 18:9-14

The parish office will be closed on Friday, November 1<sup>st</sup>, for All Saints Holy Day of Obligation.



**Could ye not watch with me one hour?** Divine Mercy ministry offers us the opportunity to share an hour of watch. **Adoration of the Blessed Sacrament** is a quiet, reflective, and prayerful hour, Friday's, 8:00 a.m. – 5:00 p.m., at OLMC Church and Wednesdays, 9:00 a.m. – 12:00 noon, at SSPP. **Divine Mercy Holy Hour is the second Friday of the month, 4:00 p.m. to 5:00 p.m. at OLMC.** Please call Barbara at 832-4585.



**Deceased Loved Ones**

Saturday, November 2<sup>nd</sup> is The Commemoration of All the Faithful Departed, commonly known as All Souls' Day. Blank purple pages are at the back of each church for you to list the names of your deceased loved ones. Return your listing to the back of each church or to the parish office.

Friday, November 1<sup>st</sup> is All Saints Day, a Holy Day of Obligation (the parish office will be closed). You can attend either a vigil Mass on Thursday, October 31<sup>st</sup>, and/or Mass on Friday, November 1<sup>st</sup> (see location and times below).

**Vigil Masses – Thursday, October 31<sup>st</sup>**

*Saints Peter and Paul 5:30 p.m.*

*Our Lady of Mount Carmel 7:00 p.m.*

**Holy Day Masses – Friday, November 1<sup>st</sup>**

*Our Lady of Mount Carmel 7:30 a.m.*

*Saints Peter and Paul 9:30 a.m.*

*Saint Elizabeth Ann Seton 7:00 p.m.*

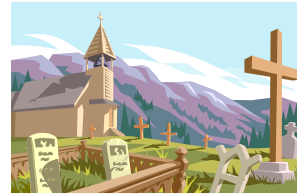
**All Soul's Day Masses - Saturday, November 2<sup>nd</sup>**

*Our Lady of Mount Carmel 9:00 a.m.*

*Saint Elizabeth Ann Seton 9:00 a.m.*

*Saints Peter and Paul 10:30 a.m.*

**All Soul's envelopes are available at the back of the church.**



**Commemoration of all the Faithful Departed**

**All Soul's Day Cemetery Blessings**

**Saturday, November 2<sup>nd</sup>, 2013**

*9:00 a.m. – Tajique*

*9:30 a.m. – Estancia*

*10:00 a.m. - McIntosh*

*10:00 a.m. – Mountain Valley (Barton Road)*

*10:45 a.m. – Martinez*

*11:45 p.m. – Stanley*

*1:15 p.m. – Los Cabos (Tapia)*

*3:00 p.m. – Our Lady of Mount Carmel*



**Please mark your calendar!!! All Saints Family Fun Day**

**Saturday, November 2<sup>nd</sup>, 12:00 Noon – 5:00 p.m. at Our Lady of Mount Carmel parish hall. There will be food, bingo, cake walk, "guess the weight of the pumpkins" raffle, a pumpkin decorating contest, Saint's costume contest, music, and just a happy wonderful time for the entire family. If you are interested in helping or donating food or bingo items, please call Karen at the parish office, 832-6655 or Vince at 832-4307.**



**October Month of the Rosary**

**Praying the Rosary during the Month of October**  
Wherever there is faith there is the example of Mary, because she lived by faith as the Scriptures remind us....

The times and locations for praying the Rosary:

**Our Lady of Mount Carmel**

Mon – Wed., and Sat: follows the 5:30 p.m. Mass  
Thurs. 3:00 p.m.

Fri: follows the 7:30 a.m. Mass

Sun: follows the 10:00 a.m. Mass

**Saint Elizabeth Ann Seton**

Mon – Fri: follows the 3:00 p.m. Divine Mercy

**Saints Peter and Paul**

Mon – Fri: follows the 3:00 p.m. Divine Mercy

**San Antonio**

Mon – Thurs., and Sat: 7:00 p.m.

Fri: follows the 3:00 p.m. Divine Mercy

Sun: follows the 9:30 am Mass



***How Can We Help?***

*There is a misconception that Right to Life only helps babies from being aborted, but we also help the elderly from euthanasia. If we are not educated in different options that are available to families, our loved ones could suffer. Let us, Estancia Valley Right to Life, help you before you make your decision. Please contact Robbie Dolce at 832-4516 for more information.*

**WORD OF LIFE**

**Please pray for:** All bishops and priests that they will be renewed in brotherhood with one another and strengthened in courage and perseverance as they proclaim the dignity of every human person; We pray to the Lord.

*Only if I serve my neighbor can my eyes be opened to what God does for me and how much He loves me.*  
- **Benedict XVI.**



**Archdiocese of Santa Fe - Sacramental Marriage  
Finding Love and Life in the Divine Plan**

**(quotes to promote the Sacrament of Marriage):**

“For this reason a man shall leave his father and mother and be joined to his wife, and the two shall become one flesh; so they are no longer two, but one flesh. Therefore, what God has joined together, no human being must separate.  
–Jesus Christ (Matthew 19:5-6)



**The Stewardship of Treasure**

*Sharing our talents arises from the fact that God has given each of us the ability and gifts to do certain things well, and we are to develop those talents for the good of others.*

**Bible Study**



**Bible Studies and Prayer Groups**

Saint Elizabeth Ann Seton’s Bible Study will resume, beginning, Tuesday, October 1<sup>st</sup>. Bible Study will meet on the 1<sup>st</sup> and 3<sup>rd</sup> Tuesday of the month. There will be a morning session (10 a.m. – 11:30 a.m.) and an evening session (7 p.m. – 8:30 p.m.). The new season begins with the study of the Gospel of Matthew. Genny Reasor is the facilitator and can be reached at 505.286.6347.



**Archdiocese of Santa Fe Annual Catholic Appeal**

The ACA 2013 theme is “*Faith is Our Gift to Share*”. In this Year of Faith we give of our time, talent and treasure to build up the kingdom of God. Check our progress on the ACA thermometers at each church and if you have not pledged, prayerfully consider doing so.

ACA pledge cards are at the back of each church. Call Cathy at the Parish Office with any questions. *Thank you for supporting our Parish and the Archdiocese of Santa Fe Annual Catholic Appeal.*



**Knights of Columbus meetings and events**

**Corporate Communion at Sts. Peter & Paul**

*Sunday, November 3<sup>rd</sup>, at 11:30 a.m. Mass*

**Member Meeting**

*Tuesday, November 5<sup>th</sup>, 7:00 p.m.*

**Social Night**

*Tuesday, November 19<sup>th</sup>, 7:00 p.m.*

**The Knights of Columbus Essay Contest is Here!**

Attention all Students Grades 8 – 12, Essay entry forms can be obtained at the back of each church. This year's theme is: *"The Importance of Religious Freedom"*. Deadline to submit your essay is October 31<sup>st</sup>. For more information contact Vincent Montañó at 832-4307.

**Squires of the Knights of Columbus**

For young men (ages 10 to 18). Contact Gary Neely at 886-1160 or e-mail [gary@s3digital.com](mailto:gary@s3digital.com).



**Twenty-Ninth Sunday in Ordinary Time**

**In the Gospel today Jesus tells his disciples to pray always without becoming weary, indeed our prayer must always be an expression of our love for God, our family, our world, and especially for the suffering poor.**

As you place your gift in the Society of St. Vincent de Paul Green Envelope and /or food basket, please say a special prayer for the poor who have no one to pray for them.

**St. Vincent de Paul Member Meetings**

November 8, 2013 Noon at OLMC Hall

We are in need of members on Friday's at the utility disbursement in Moriarty and the food distribution in Estancia (once a month). If you can help in any way please call Cathy at 832-6655 or Sonia at 515-8161 for more information.

**This month the food pantry is in need of:**

Rice, Instant Mashed Potatoes, Cereal

**Please place food donations in the baskets located at the back of the church. Thank you!**

**Adult Formation Groups**

"What We Believe". Learn more about your Catholic Faith or what the Catholic Church teaches and believes, Thursday evenings at 6:30 p.m. to 8:00 p.m. at Our Lady of Mount Carmel Parish Hall in Moriarty.



*If you are not receiving your Sunday tithing envelopes and would like to have them please call the parish office. Electronic tithing makes your Sunday contributions convenient and timely. Sunday envelopes reflect a checkbox to indicate electronic payments or online bill pay. For information, please call Cathy at 832-6655.*

**Finance Report - Week of Sept. 28- Oct. 4, 2013**

**General Operating Account**

**Income:** Sunday Collection \$6,902.55; Child/Youth \$3.00; Candles \$43.35; Mass Stipend Trust \$90.00; Program fee \$15.00; Clergy stole fee \$25.00; Designated Donation, EDGE \$107.52; Catechism Workshop fee \$10.00.

**Total: \$7,196.42**

**160 families used their envelopes this week.**

**Expense:** Payroll \$6,061.72; EDGE Bibles \$107.52; Electric all areas \$1062.78; Gas \$194.54; Funeral Music \$50.00; Liturgy books \$28.45; Water/Sewer/Garbage \$423.84; Exterminator \$58.85; Grounds supply \$360.40.

**Total: \$8,348.10**

**Income minus Expense for the week - Negative \$1,151.68**

**Income minus Expenses for the month of Oct. 2013**

**Income \$7,196.42 minus Expenses \$8,348.10 =  
Negative \$1,151.68**

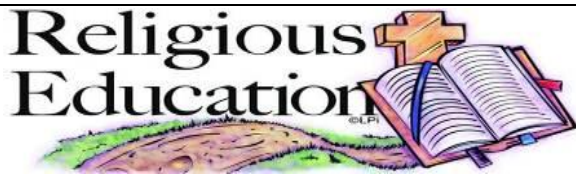


***Together, Let us Pray***

***(for people hospitalized/homebound and unable to attend Mass)***

***Join our parish ministry PRAYER NETWORK!***

The need is great to pray for others. Please call Dyann at 286-7717. Thank you and may God be with you. (Team Leaders are also needed if you are interested).



**Religious Formation**

Kindergarten – 5<sup>th</sup> Grade EDGE - (6<sup>th</sup> – 8<sup>th</sup> grades)  
Youth Confirmation Sacramental Preparation  
*Registration forms for Religious Ed and EDGE can be obtained at the parish office and on our parish website*  
[www.estanciavalleycatholicch.org](http://www.estanciavalleycatholicch.org).

**RE (Kindergarten – 5<sup>th</sup> grade)**

Classes in all areas are held on Sundays  
OLMC (Moriarty), Sunday, 8:30 a.m. – 9:45 a.m.  
SEAS (Edgewood), Sunday, 9:15 a.m. – 10:30 a.m.  
SSPP (Estancia), Sunday, 10:00 a.m. – 11:15 a.m.

**EDGE (6<sup>th</sup> – 8<sup>th</sup> grade)**

Classes are held on Mondays  
at Our Lady of Mount Carmel in Moriarty  
5:30 p.m. – 8:00 p.m.

*The EDGE program begins with 5:30 p.m. Mass at Our Lady of Mount Carmel Church in Moriarty, followed with a delicious free meal, and then the EDGE class program.*

**Confirmation (High School)**

OLMC (Moriarty), Wednesday 7:00 p.m.  
SEAS (Edgewood), Wednesday, 7:00 p.m.  
SSPP (Estancia), Wednesday, 7:00 p.m.

**Adult Confirmation**

Classes are held every Saturday, Sept. 28 - Nov. 23, 2013  
10:00 am – 12:00 pm at OLMC Parish Hall

**[formation@evcpnm.org](mailto:formation@evcpnm.org)**

Karen Easley, Catechetical Leader 832-6655, ext. 12  
*Office Hours: Tuesday 11:00 a.m. – 3:00 p.m.  
Wednesday and Thursday 10:00 a.m. – 3:00 p.m.*

**An Invitation to La Convivencia**

*La Convivencia, hosted by our ministry, Comunidad Hispaña, meets the first Sunday of the month at Saints Peter and Paul parish hall in Estancia, following the 11:30 a.m. Sunday Mass at Saints Peter and Paul Church. This is a venue for parishioners to come together to visit, share a delicious potluck meal, and partake in parish fellowship. Come – have fellowship. Bring a potluck dish to compliment the many other food items for the meal.*



A designated wheelchair area is available in the front right side of the side chapel of Our Lady of Mount Carmel Church. A walker and wheelchair is available at OLMC. The Mayordomos can assist with any questions.

**PROJECT request**

**You are invited to help us with an exciting project!!**  
A committee has been formed to collect and preserve the histories of the various communities of the Estancia Valley Catholic Parish. *Knowing how we came to be helps us understand who we have become.* Call or contact the parish community of your particular interest:

**Saints Peter and Paul, Estancia**

Gloria Pohl, 384-2377, [gspohl@yahoo.com](mailto:gspohl@yahoo.com)

**San Antonio, Tajique**

Deacon Juan Lucero, 384-2240, [zebdeo@gmail.com](mailto:zebdeo@gmail.com)

**Our Lady of Mount Carmel**

Peggy Schwebach, 34-5139, [pschwebach@aol.com](mailto:pschwebach@aol.com).

**San Antonio, Tapia**

Jean Ortiz 832-4396



To receive e-mail notification of funeral arrangements within our parish, please e-mail Marian at [assistant@evcpnmn.org](mailto:assistant@evcpnmn.org) at the parish office.

**(McLeod Medical Center)**